

Estimations of HIV infections: Nepal 2007

1. Process for Estimations in 2007

2. Estimations of HIV for Nepal: what's new in 2007?
3. 2007 Results
4. Clarifications



Nepal STI, HIV and AIDS Control Board
National Centre for AIDS and STD Control

HIV Estimations Process, 2007

Apr 2007	NCASC request M&E Technical Working Group
Apr 2007	Technical training in Bangkok (UNAIDS/WHO)
Jul 2007	Core Technical Team formed
Jul 2007	Up-to-date data for Nepal gathered
Aug 2007	Technical training Workshop by Core team
Sep-Oct07	Nepal population data & projections developed
Nov 2007	New surveillance data finalized and entered (<i>2007 IBBS among IDUs and MSM</i>)
Dec 2007	Preliminary results shared with MoHP & NHRC
Dec 2007	Preliminary results reviewed with technical team
Jan 2008	Results shared with SAE, MoHP & NHRC
Apr 2008	Dissemination of 2007 Nepal Estimates



Nepal STI, HIV and AIDS Control Board
National Centre for AIDS and STD Control

Acknowledgements

The 2007 Estimations of HIV infections was a collaborative effort led by the NCASC with technical assistance from UNAIDS, FHI and WHO.

The NCASC acknowledges the contributions from a range of stakeholders consulted in the process as well as the national Strategic Information Technical Working Group.



Nepal STI, HIV and AIDS Control Board
National Centre for AIDS and STD Control



UNAIDS
JOINT UNITED NATIONS PROGRAMME ON HIV/AIDS

UNICEF
UNEP
UNFPA
UNHCR
UNRWA
WFP
WHO
WORLD BANK



Estimations of HIV infections: Nepal 2007

1. Process for Estimations in 2007
- 2. Estimations of HIV for Nepal: what's new in 2007?**
3. 2007 Results
4. Questions?



Nepal STI, HIV and AIDS Control Board
National Centre for AIDS and STD Control

What is New?

- Use of new and better surveillance data for high-risk groups
 - 3 data points at 2 year interval for FSW, truckers, and IDUs;
 - 2 data points for MSM; and
 - 1 data point for migrants to India
- Children infected through Mother to child transmission are more reliably estimated from SPECTRUM



Nepal STI, HIV and AIDS Control Board
National Centre for AIDS and STD Control

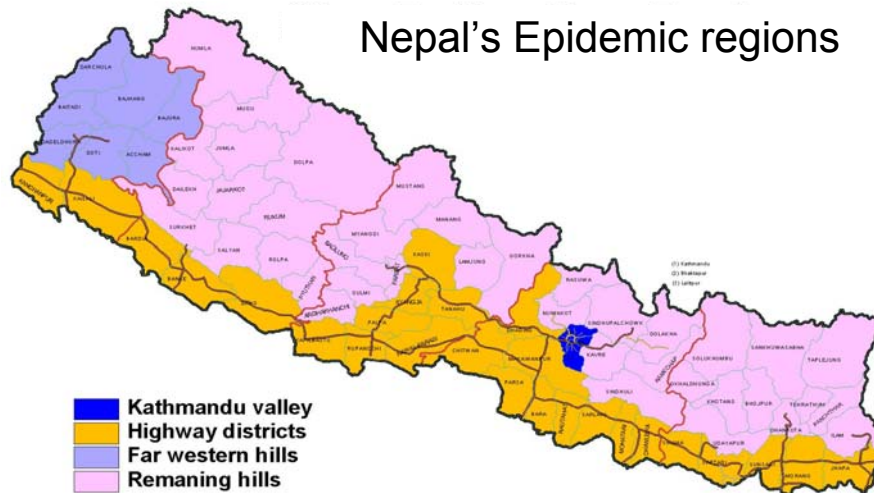
What is New?

- New population sub-groups (previously not included) taken into account in 2007 estimates :
 - Ex FSWs, IDUs and migrant workers who are no longer in high-risk behaviours but are infected and now part of the general population
 - Trafficked girls and women who return to Nepal and have been infected but were not previously reflected in the overall numbers



Nepal STI, HIV and AIDS Control Board
National Centre for AIDS and STD Control

Nepal's Epidemic regions



Nepal STI, HIV and AIDS Control Board
National Centre for AIDS and STD Control

Estimations of HIV infections: Nepal 2007

1. Process for Estimations in 2007
2. Estimations of HIV for Nepal: what's new in 2007?
- 3. 2007 Results**
4. Clarifications



Nepal STI, HIV and AIDS Control Board
National Centre for AIDS and STD Control

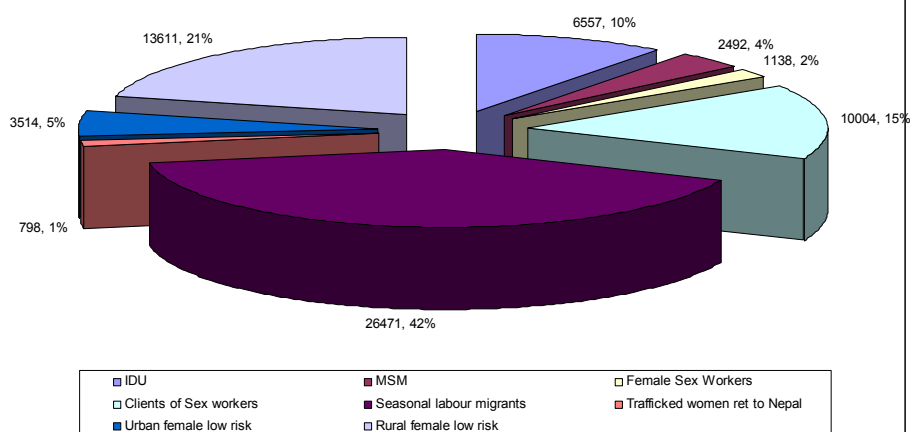
Estimation of Adult HIV Infections in Nepal, 2007- Results (15-49 yrs)

Number of adults (15-49) LWH:	64,585
Number of women (15-49) LWH:	16,387
Percent adult (15-49) prevalence (%):	0.49%
Percent of LWH who are female (%):	29.5%



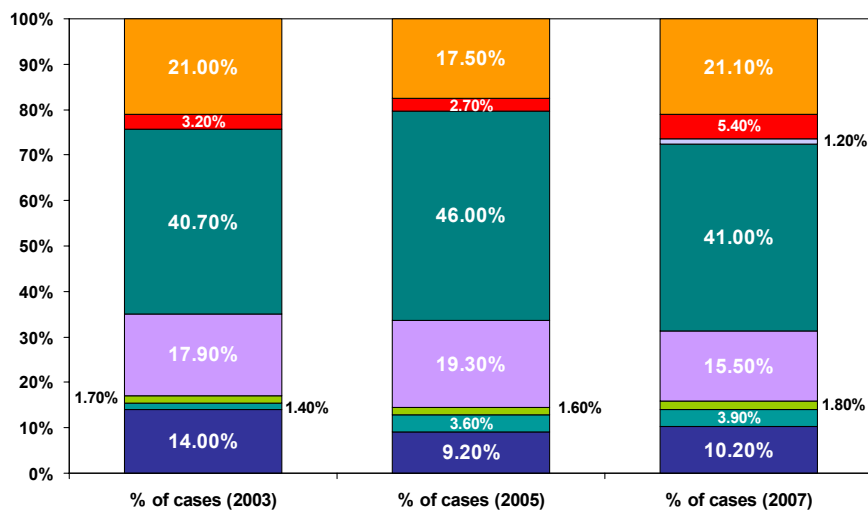
Nepal STI, HIV and AIDS Control Board
National Centre for AIDS and STD Control

Distribution of HIV infections by population group (15-49) 2007



Nepal STI, HIV and AIDS Control Board
National Centre for AIDS and STD Control

Distribution of HIV infections by population group (15-49 yrs – 2003-2007)



■ IDU ■ MSM ■ Female Sex Workers ■ Clients of Sex workers
■ Seasonal labour migrants ■ Trafficked women ret to Nepal ■ Urban female low risk ■ Rural female low risk

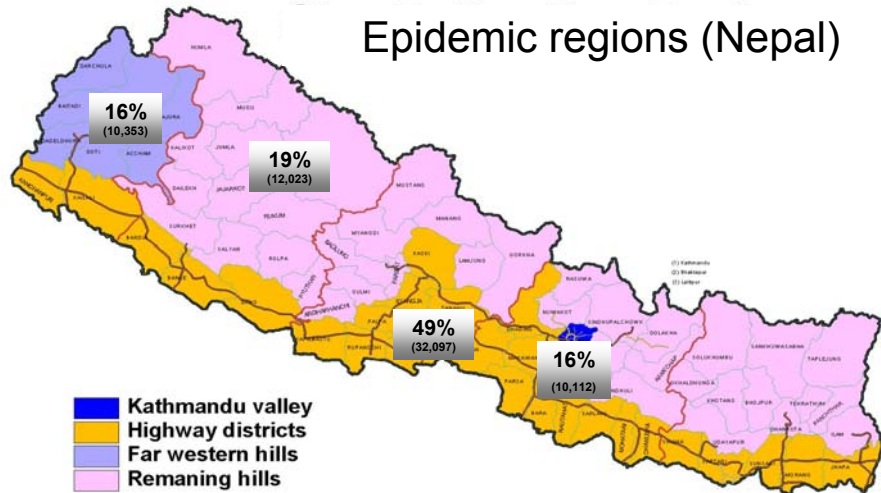
Distribution of Adult HIV Infections by Epidemic Region (2007)

Region	Number	%
Kathmandu	10,112	15.7%
Terai	32,097	49.7%
Far West	10,353	16.0%
Remaining hills	12,023	18.6%
Nepal	64,585	100%



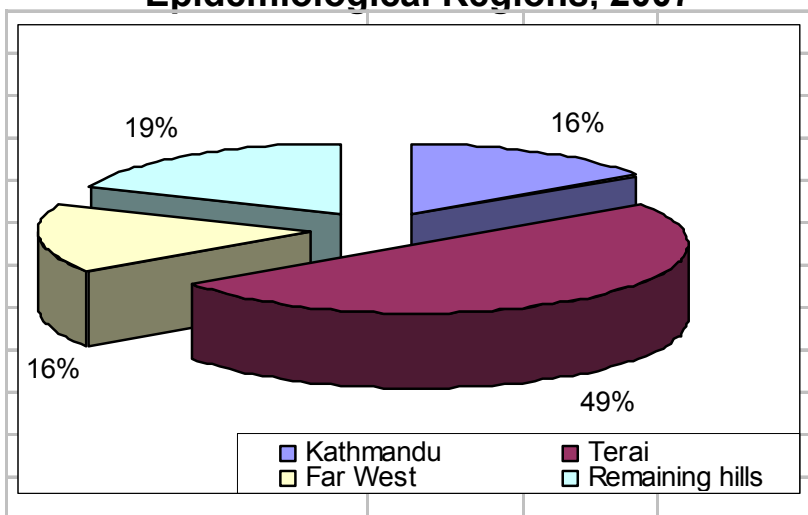
Nepal STI, HIV and AIDS Control Board
National Centre for AIDS and STD Control

Epidemic regions (Nepal)



Nepal STI, HIV and AIDS Control Board
National Centre for AIDS and STD Control

Distribution of Adult HIV infections by Epidemiological Regions, 2007



Nepal STI, HIV and AIDS Control Board
National Centre for AIDS and STD Control

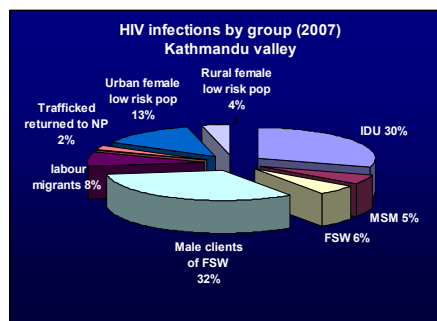
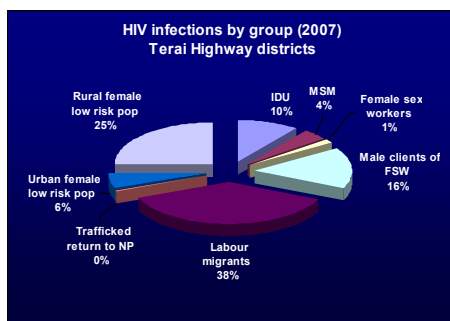
Estimation of HIV Infections by age group-2007 (SPECTRUM outputs)

Population Sub-groups	Estimated Infections
Children (0-14)	1,857
Adults (15-49)	64,585
Adults (50+)	3,348
Total	69,790



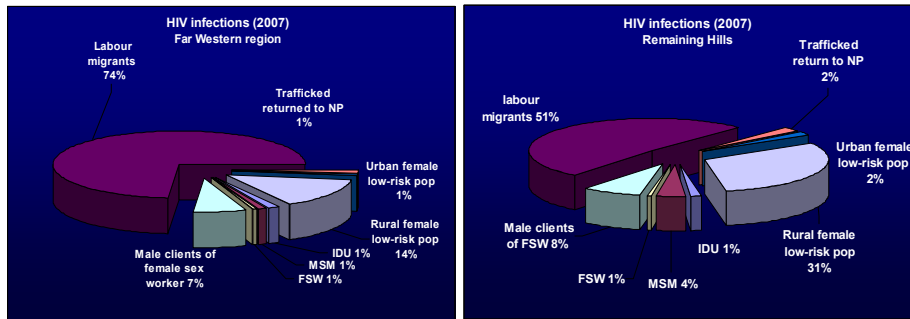
Nepal STI, HIV and AIDS Control Board
National Centre for AIDS and STD Control

HIV infections in Nepal: Epidemic regions (1) (2007)



Nepal STI, HIV and AIDS Control Board
National Centre for AIDS and STD Control

HIV infections in epidemic regions (2007) (2)



Nepal STI, HIV and AIDS Control Board
National Centre for AIDS and STD Control

Improvements in the process of estimating of HIV infections

1. Better degree of confidence in the data and accuracy of estimates
2. Better trend data is available
3. Entire process of estimations was done in country
4. Capacity in country developed
5. Estimating HIV infections is a process -keeps improving over time



Nepal STI, HIV and AIDS Control Board
National Centre for AIDS and STD Control

Estimations of HIV Infections: Nepal 2007

1. Process for Estimations in 2007
2. Estimations of HIV for Nepal: what's new in 2007?
3. 2007 Results
- 4. Clarifications**



Nepal STI, HIV and AIDS Control Board
National Centre for AIDS and STD Control